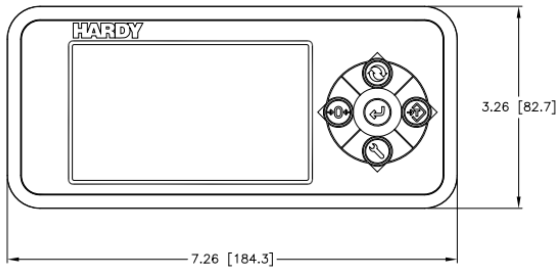


TECHNICAL NOTE

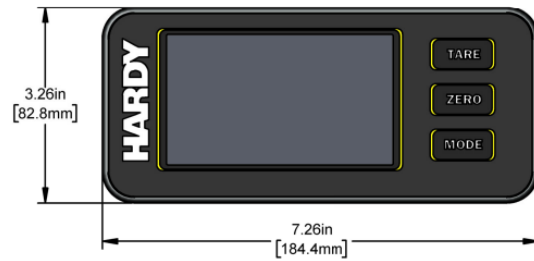
HARDY HI6500 TO HI6501 MIGRATION

Displays and Instrument Enclosure:

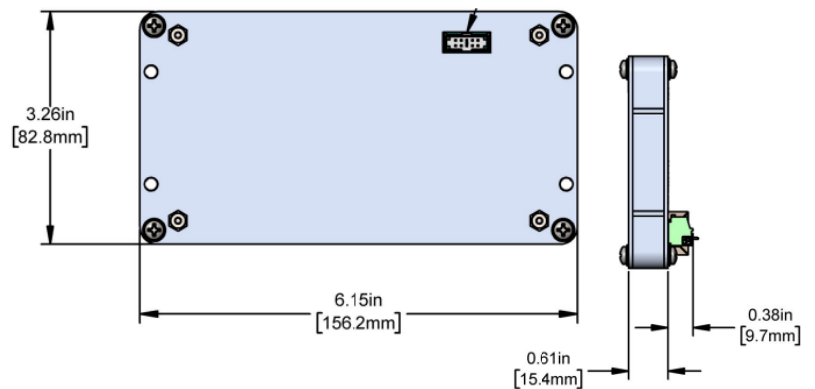
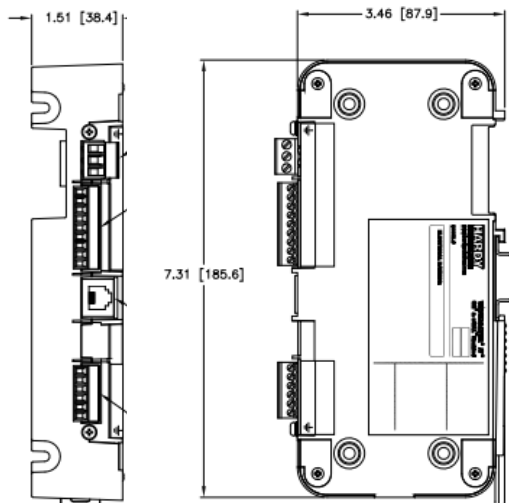
HI6500



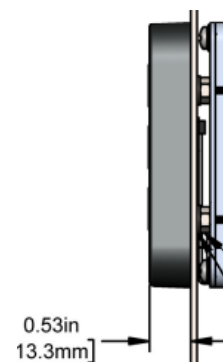
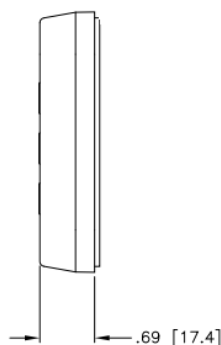
HI6501



Enclosures

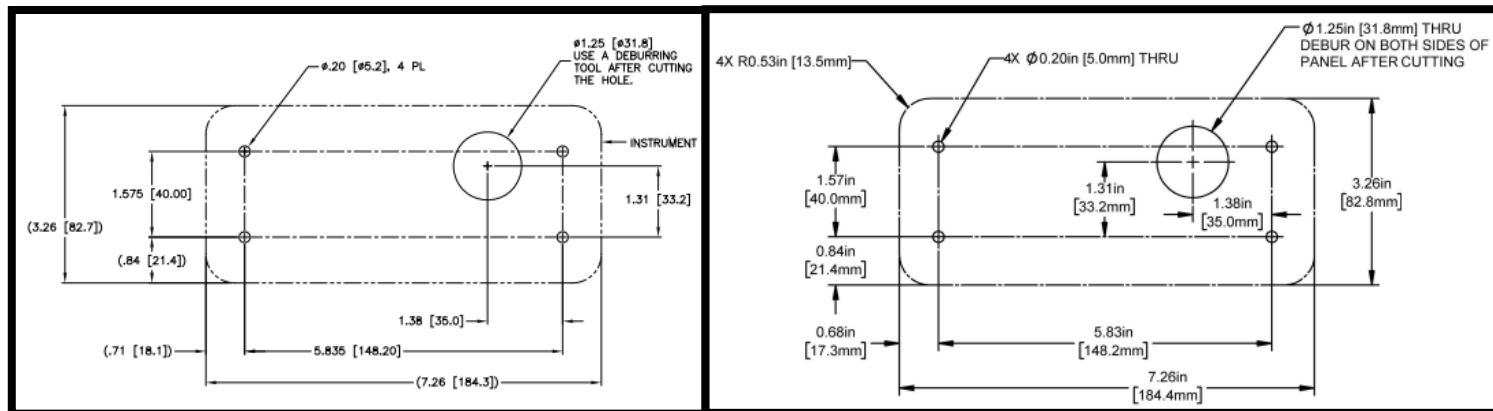


Display Side View

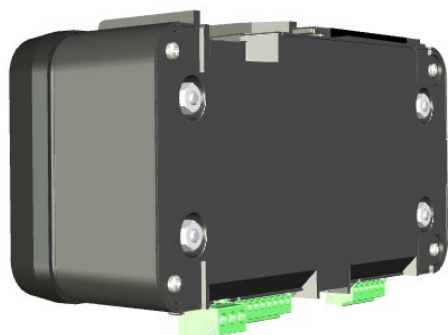


No modifications to mounting holes are required to migrate from an HI6500 to HI6501.

HI6501



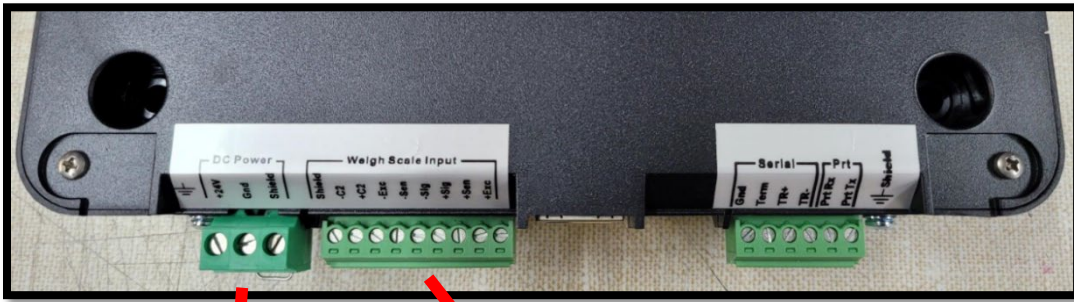
HI6501



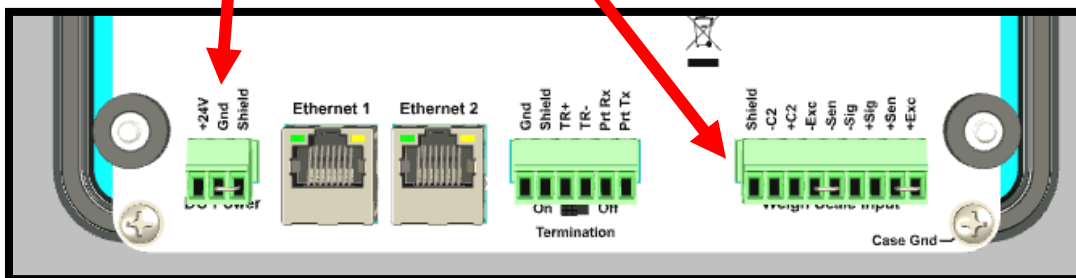
LOAD CELL INPUT CONNECTIONS

The HI6500 and HI6501 connectors are different, so the end user will need to transfer wiring.
The connection points are labeled and the colors are the same.

HI6500



HI6501



Communication, Weight Readings, Commands

- The HI6501 Default IP address is 192.168.0.100
- The EDS_AOP file is available on the Hardy website.
- The Tare, Zero and Calibration command values are the same and are executed the same way.
- Refer to the manual for all possible commands and statuses.

HI6500				WEIGHT READING				HI6501			
[-] HI6500:I	{...}		_0102					[-] HI6501:I	{...}		_0102
[+] HI6500:I.Command		0	Decimal	DINT				[+] HI6501:I.Command_Echo		0	Decimal
[+] HI6500:I.Command_Status		0	Decimal	DINT				[+] HI6501:I.Command_Status_and_Counts		0	Decimal
[-] HI6500:I.ConnectionFaulted		0	Decimal	BOOL				[-] HI6501:I.ConnectionFaulted		0	Decimal
[-] HI6500:I.Gross_Weight		6500.0	Float	REAL				[-] HI6501:I.Gross_Weight		6501.0	Float
[-] HI6500:I.Net_Weight		0.0	Float	REAL				[+] HI6501:I.Instrument_Status		0	Decimal
[+] HI6500:I.Parameter_ID		0	Decimal	DINT				[-] HI6501:I.Net_Weight		0.0	Float
								[+] HI6501:I.Parameter_Value		0	Decimal

HI6500				Entering a C2 Calibration Command				HI6501			
[-] HI6500:O	{...}		_0102					[-] HI6501:O	{...}		_0102
[+] HI6500:O.Command		102	Decimal	DINT				[+] HI6501:O.AuxCommand		0	Decimal
[+] HI6500:O.Parameter_ID		0	Decimal	DINT				[+] HI6501:O.Command		102	Decimal
[+] HI6500:O.Parameter_ID_1		0	Decimal	DINT				[+] HI6501:O.Parameter_ID		0	Decimal